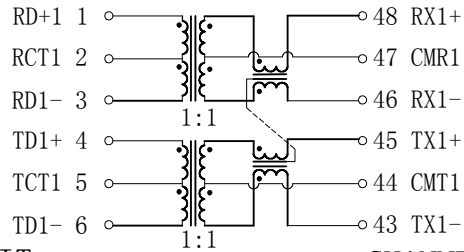


Schematic:

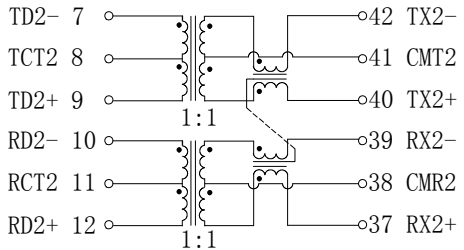
REV.	ECN NO.	DESCRIPTION	DATE	APPD
A	REL		2012/03/25	

RECEIVE



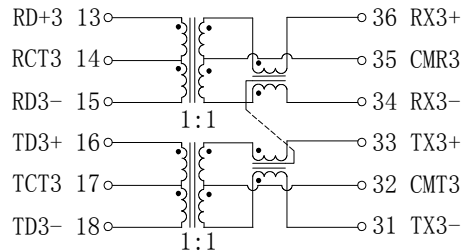
TRANSMIT

CHANNEL 1



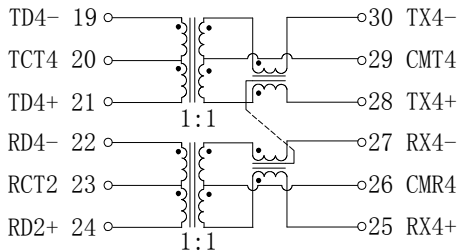
RECEIVE

CHANNEL 2



TRANSMIT

CHANNEL 3



RECEIVE

CHANNEL 4

CHIP SIDE

MEDIA SIDE

Electrical Specifications: @25°C

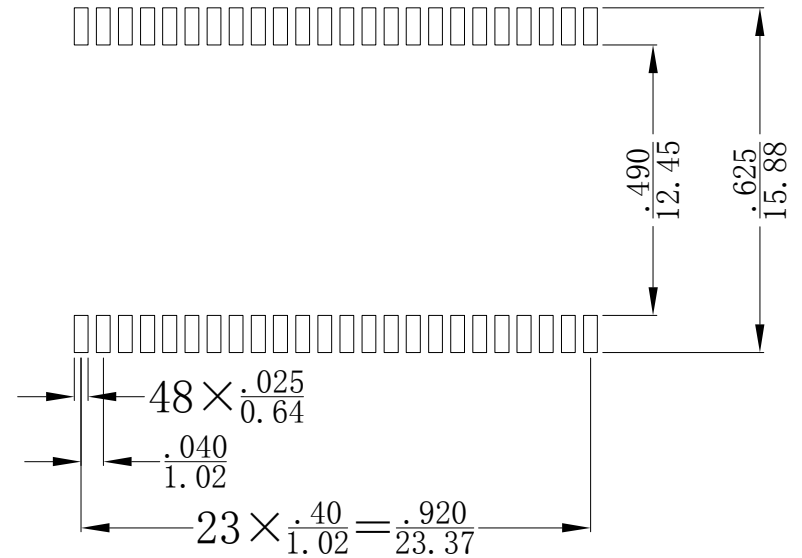
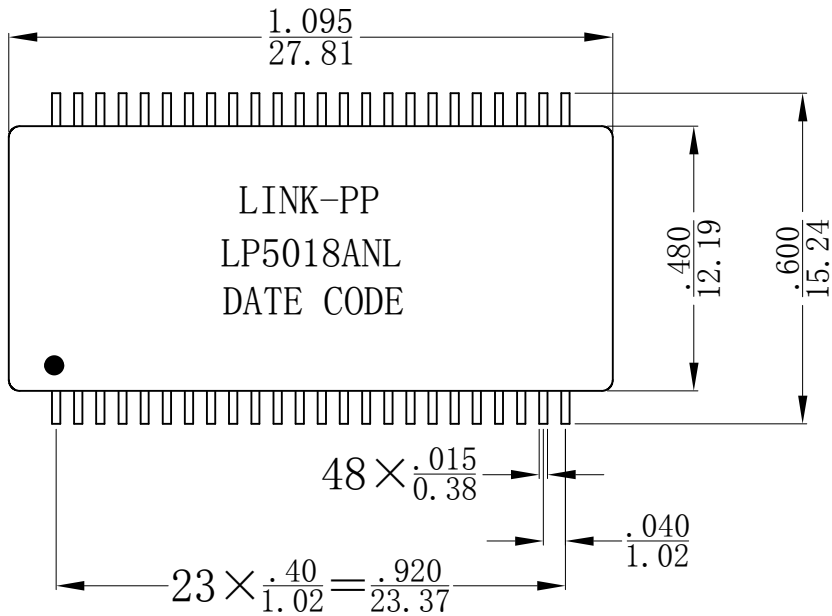
- Insertion Loss:
 1-100MHz:-1.2dB Max
- Return Loss:(dB Min @100 Ω)
 1-30MHz:-16; 40MHz:-14
 50MHz:-13; 60-80MHz:-12
- Crosstalk:
 30MHz:-45dB Min
 60MHz:-40dB Min
 100MHz:-35dB Min
- DCMR:
 30MHz:-43dB Min
 60MHz:-37dB Min
 100MHz:-33dB Min
- Isolation Voltage:1500Vrms Min.
- PoE applications current capability: 600mA.
- Operating Temperature: -40°C ~+85°C.



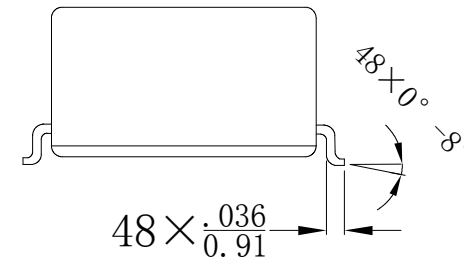
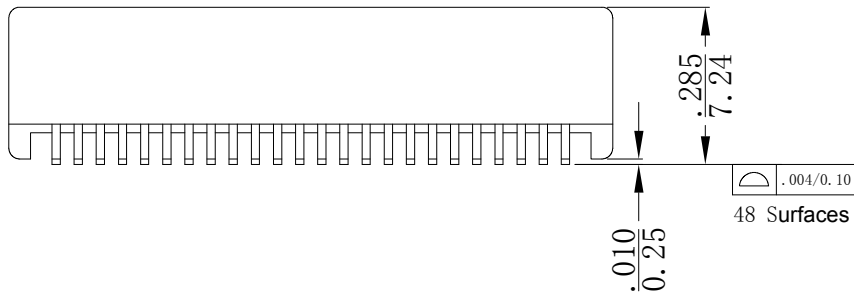
X:X	±0.20	APPD:	LINK-PP INT'L TECHNOLOGY CO., LIMITED	
X:XX	±0.10	CHKD:	TITLE: Power over Ethernet(PoE)Magnetics 10/100Base-Tx VoIP Magnetics Modules	
X:XXX	±0.05	DR: TOM	PART NO. : LP5018ANL	
ANGLES	±1°	UNIT: $\frac{\text{Inches}}{\text{mm}}$		
	SCALE: 2/1	SHEET: 1/2	REV: A	DWG NO. : LP10111229

Mechanical:

REV.	ECN NO.	DESCRIPTION	DATE	APPD
A	REL		2012/03/25	



SUGGESTED PAD LAYOUT



NOTES:

1. Designed for IP phone or switch applications
2. IEEE 802.3af/ADSI X3.263 Compliant performance
3. Inductance(100KHz/0.1V@8mA): 350uH Min
4. RoHS"NL" peak solder rating 260°C±5°C.



X:X	±0.20	APPD:	LINK-PP INT'L TECHNOLOGY CO., LIMITED	
X:XX	±0.10	CHKD:		
X:XXX	±0.05	DR: TOM	TITLE: Power over Ethernet(PoE) Magnetics 10/100Base-Tx VoIP Magnetics Modules	
ANGLES	± 1°	UNIT: $\frac{\text{Inches}}{\text{mm}}$	PART NO.: LP5018ANL	
	SCALE: 2/1	SHEET: 2/2	REV: A	DWG NO.: LP10111229

Sales Department A-B2

Sales Engineer / Summer Ming - 明夏

Tel: 0086-752-3322915 Mob: 0086-180-2668-6530

Fax: 0086-752-3161926

E-mail: Summer@link-pp.com

www.link-pp.com

LINK- PP INT'L TECHNOLOGY CO., LIMITED

Jia An Industrial Park, Chenjiang Rd, Zhongkai Hightech Zone, Huizhou City,
516003, China



LINK- PP INT'L TECHNOLOGY CO., LIMITED

Seris : LPJXXXXXXXX/ LPXXXXXXXX/ LPAXXXXXXX